



**Workflow
Manager**

NP Nova Polymers
Innovative Solutions for Accessible Signage

Powered by CADlink technology

Operation Manual

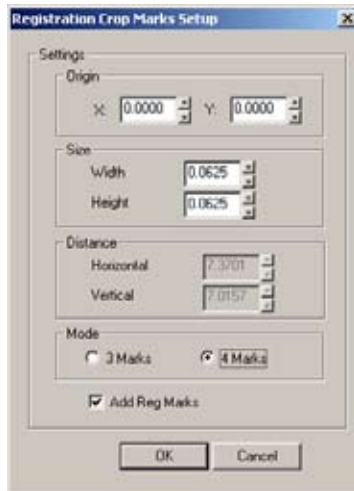
Streamline
production
and
increase
efficiency.

NOVACRYL[®]
Washes out in plain tap water.

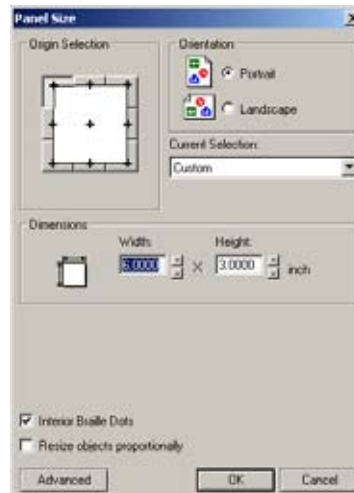
A clear glass sphere is shown on a blue, rippling surface, reflecting the surrounding light and creating a shimmering effect.

Generating Room Numbers with Workflow Manager

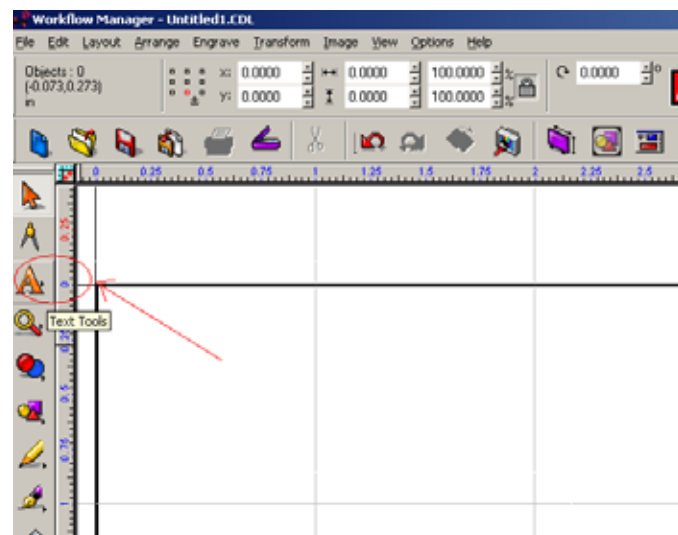
To start, lets make sure that the Registration Marks and Crop Marks are setup properly. Click on the Options menu and then Workflow Setup. Select the Registration Crop Marks Setup option. Use the following settings.



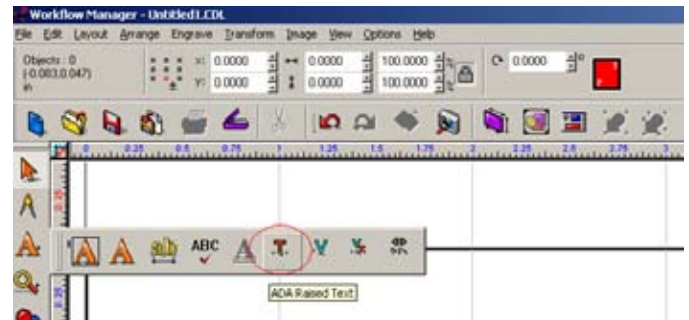
1. Set up the size of the room number sign. In this example, click on the Layout menu and then Panel Size. In the Panel Size window, set the Width to 6 and the Height to 3. For building a photopolymer based interior sign, Braille dot sizes need to be smaller than standard dot sizes. If you are printing interior signs and you need a smaller Braille cell size, enable the Interior Braille Dots option and then click on the Ok button.



2. Make sure that the appropriate braille font is selected in the Braille Properties window. To do this click on the Text tool.



3. Select the ADA Raised Text option.



4. Single click in the middle of the panel on screen. You should see the text insertion line display and all of the relevant text tools will display at the top. Click on the Braille button with your right mouse button



5. Make sure that the default Braille font is Brpunch and then select OK.



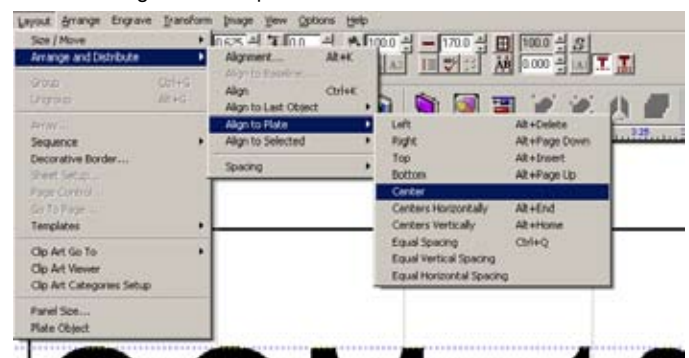
6. Select Arial as the font and set the font height to 0.625 inches.



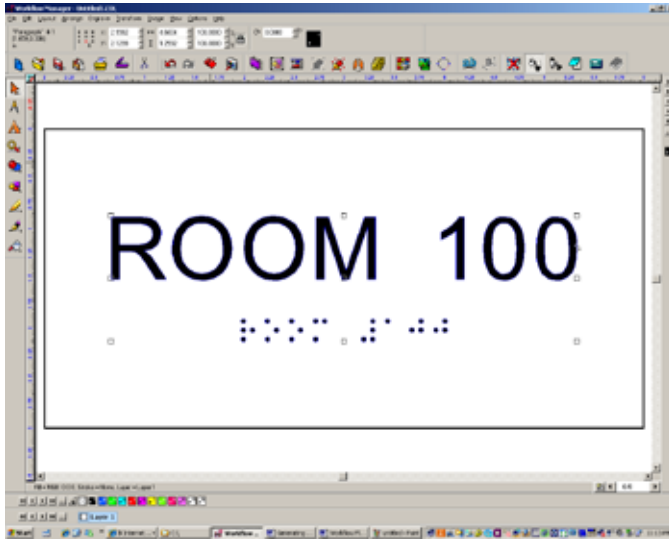
Select Arial as the font and set the font height to 0.625

7. For this example, type in "ROOM 100".

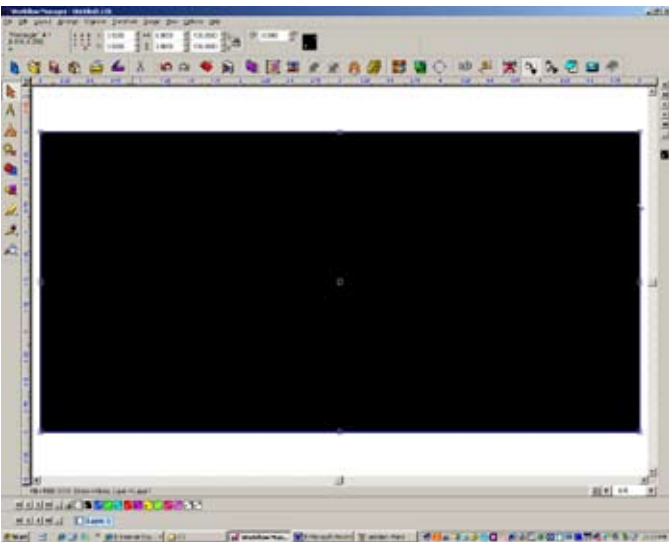
8. Click on the Layout menu and then Arrange and Distribute. Next select the Align to Plate option and then Center.



9. Your screen should look as follows:

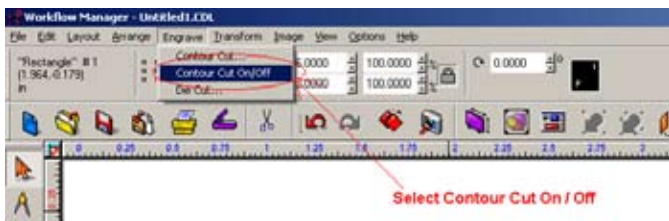


10. Click on the Layout menu and then Plate Object. Your screen will look like this.

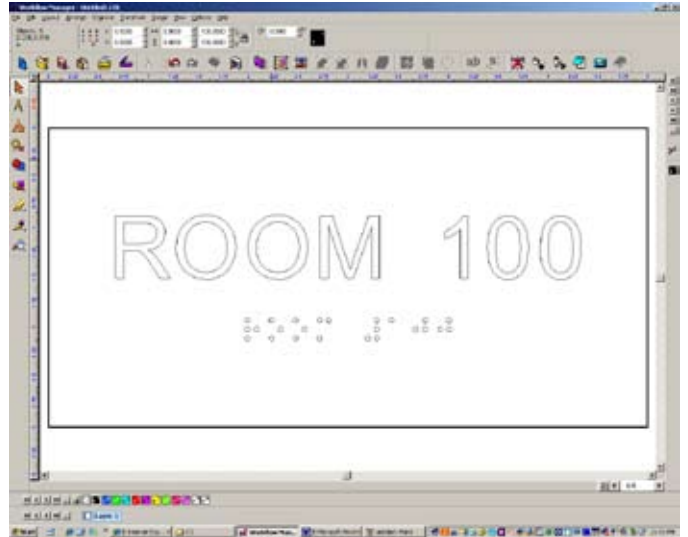


11. Click on the Layout menu and then select the Plate Object option AGAIN.

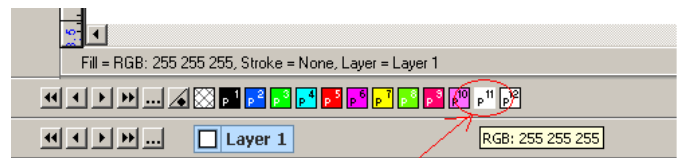
12. Click on the Engrave menu and then Contour Cut On / Off



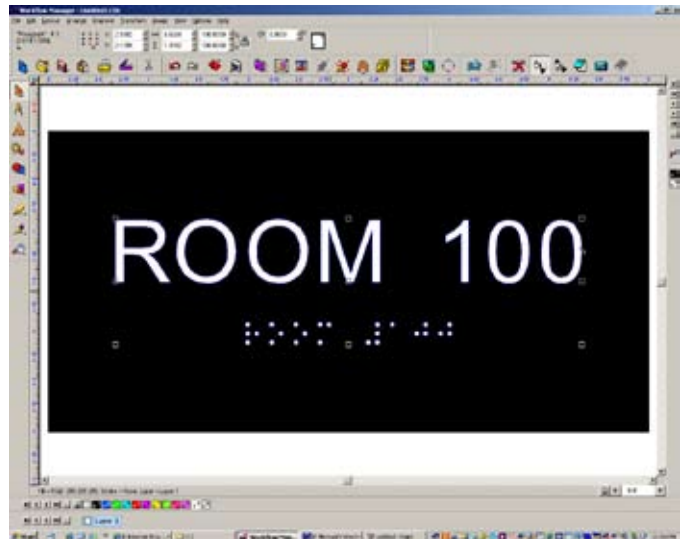
13. Click on the View menu and then Show Fill. Your screen should look as follows.



14. Single click on the text. The text should high-light in blue. Click on P11 in the color palette. This will change the color of the text and Braille to white.

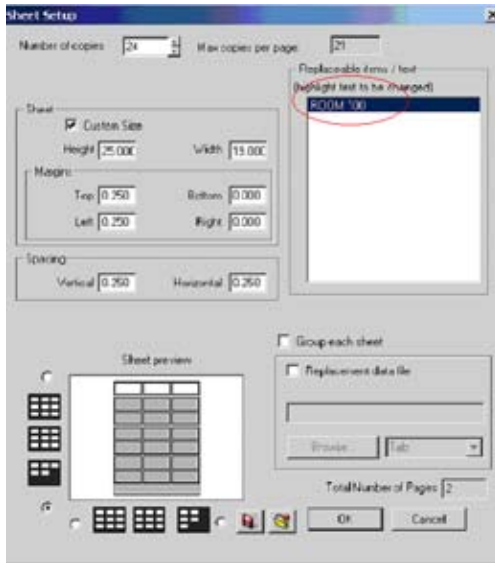


15. Click on the View menu and then Show Fill. Your screen should look as follows.

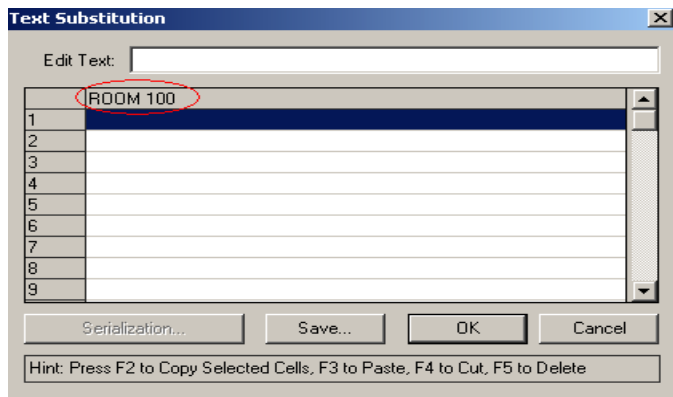


16. Click on F3. This will select all of the objects on screen. Next click on the Layout menu and then Sheet Setup. The Sheet Setup window will display.

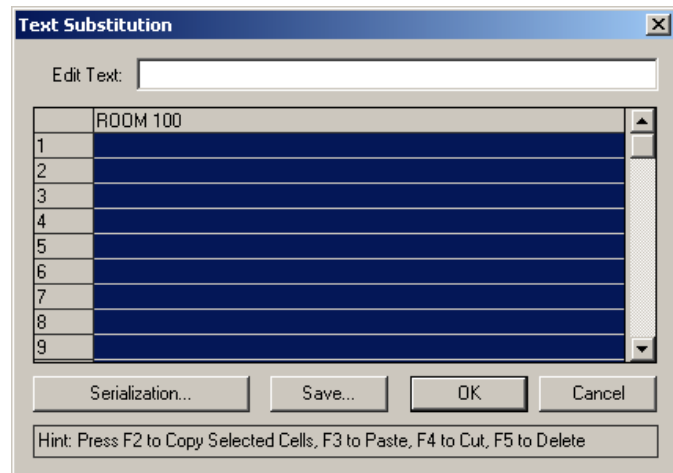
17. Setup the Sheet Setup window as shown below. Make sure to highlight the ROOM 100 in the Replaceable Items / Text section and then click on the OK button.



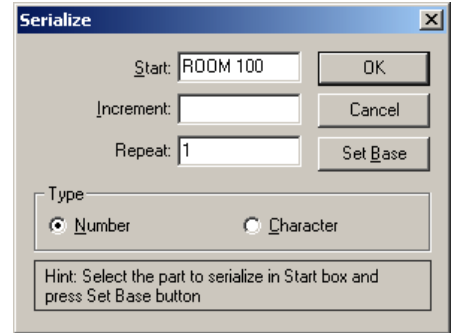
18. In the Text Substitution window, double click on the title bar that contains the text ROOM 100.



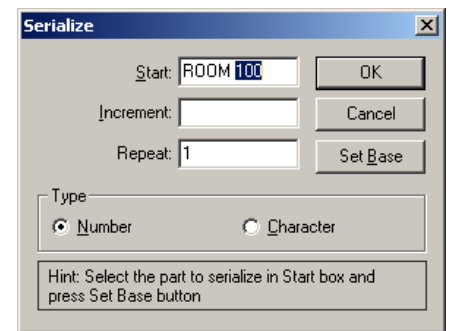
19. The Text Substitution window will look as follows.



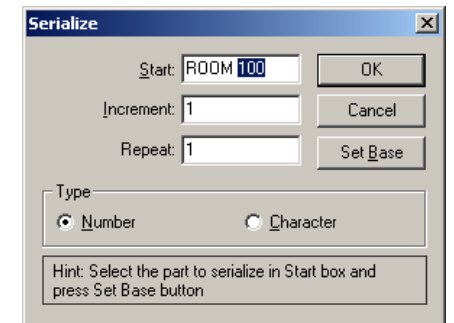
20. Single click on the Serialization button. Type in ROOM 100 in the Start text field.



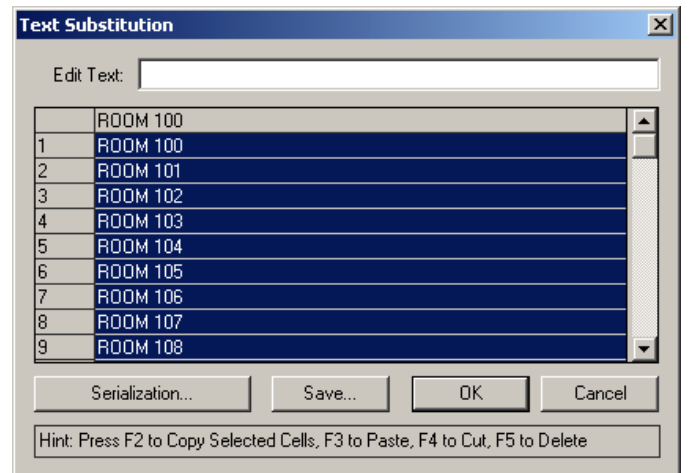
21. Highlight the number 100 and then click on the Set Base button



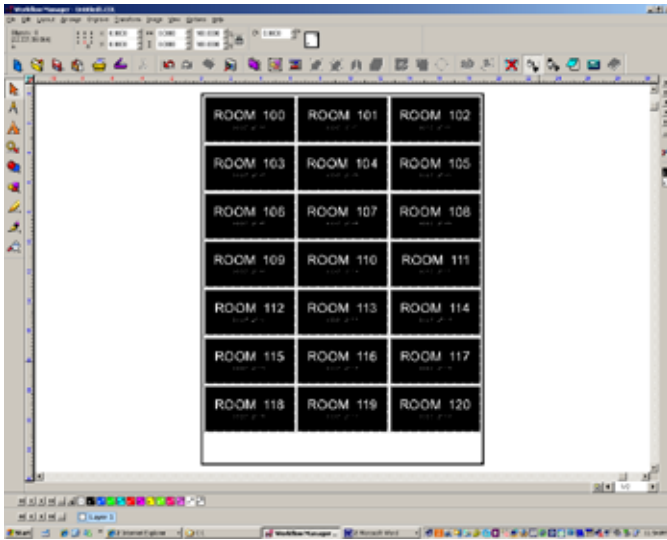
22. Set the increment value to 1 and then click on OK.



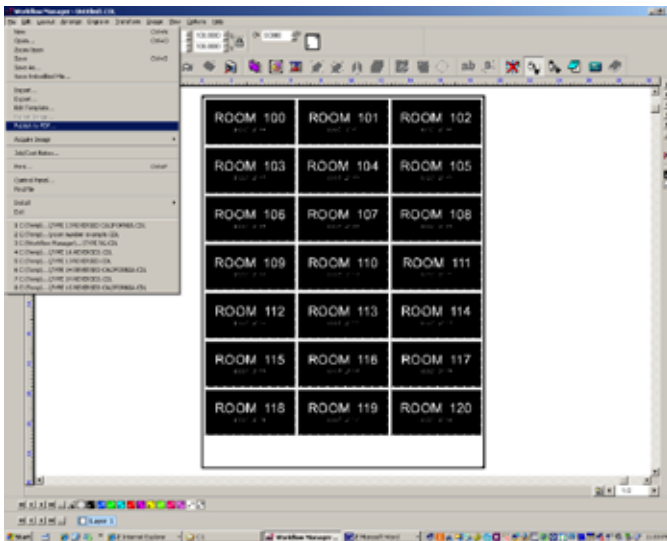
23. The Text Substitution window should look as follows. Click on the OK button



24. Your screen should look as follows



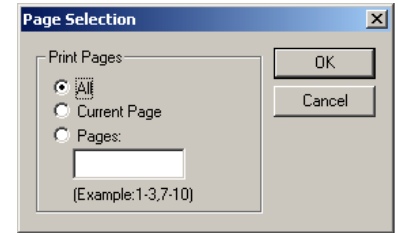
25. To generate PDFs of the two pages, click on the File menu and then Publish to PDF.



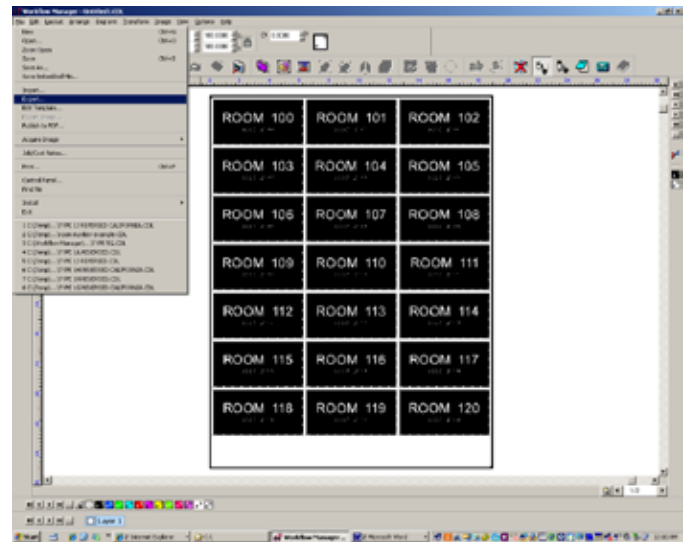
26. You will be asked to type in a job name. Next the PDF Settings window will display. Set the Quality to High. Disable all Security options and make sure that Export vectors as shown on screen is enabled. Click on OK.



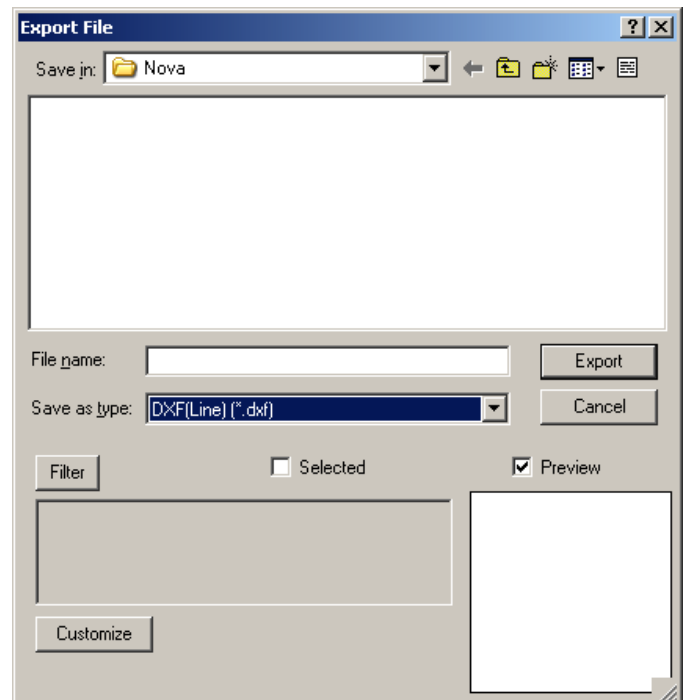
27. The Page Selection window will display on screen. If you want an individual PDF created for each page then select All and then click on OK. The PDFs will be created in the specified folder.



28. To generate DXF files that include registration marks plus the perimeter of the sign blanks, click on the File menu and then Export.



29. The Export File window will display. Select the DXF (Line) *.dxf option from the "Save as type" option. Type in a file name. In this example, the file name will be "room number". Click on the Export button.



NOVACRYL®

High-resolution graphics and ADA-compliant signage.

Too often, signs are produced as an afterthought, rather than complementing a building's design. Until now.

NovAcryl ADA-compliant signage gives architects and sign designers the creative freedom to make signs part of a building's design. With NovAcryl, the sky is the limit when it comes to colors, patterns, textures and finishes.

Plus Nova Polymers is committed to supplying the architectural design and sign fabrication industry with a complete selection of environmentally-friendly materials for ADA-compliant signage. Why? Because we recognize what is good for the environment is good for our business and good for our industry.

Our complete line of NovAcryl® high-resolution graphics and ADA-compliant signage processes in plain tap water. It is environmentally friendly and user friendly, without sacrificing quality or selection.

Washes out
in plain tap
water.

ECR-series: Nova Polymers has partnered with 3form®, recognized worldwide for innovative materials offered to architects and designers, to develop one of the most imaginative product lines ever introduced to the sign industry. Nova Polymers bonds its clear photopolymer to 3form's Varia™ series material to create sign solutions as diverse as your imagination. This new series broadly expands the selection of colors, patterns, textures and finishes now available for ADA-compliant sign fabrication.



PT™ series: NovAcryl® PT™ series is recyclable and biodegradable. With a clear base and 8 different gauges, NovAcryl® PT™ is the most versatile line of signage photopolymer ever introduced.

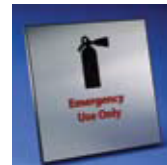


LP™ series: If you prefer marbles and granites, wood grains, plus hundreds of colors and patterns, there is NovAcryl® LP™ series. This popular material bonds to laminates made by leaders in the industry, including Pionite®, Wilsonart® and Formica®. And it all processes in plain tap water.



Color™ series: NovAcryl® Color™ is the first photopolymer raw material manufactured in TEN standard colors. Turn photopolymer sign making into a standard shop process with NovAcryl® Color™ and an economical hot foil stamp unit.

YA 125 series Interior Aluminum Photopolymer: YA125 consists of the same moisture-resistant, nylon based photopolymer layer as found on NovAcryl®. The clear adhesive layer allows for a brushed aluminum face appearance. YA 125 may be installed in unregulated interior environments.



Ex™ series: NovAcryl® Ex™ photopolymer is the industry's first pure, exterior-grade photopolymer resin. Its unique synthetic rubber monomers are exterior rated immediately after initial exposure to UV light. NovAcryl® Ex™ is compatible with all exterior paints and requires no extended treatments.



Nova Polymers is the largest U.S. manufacturer and distributor of photopolymer sign products.

NP Nova Polymers
Innovative Solutions for Accessible Signage

P.O. Box 1305, West Caldwell, New Jersey 07007-1305
T: 888.484.NOVA • F: 973.882.5614 • www.NovaPolymers.com • info@NovaPolymers.com