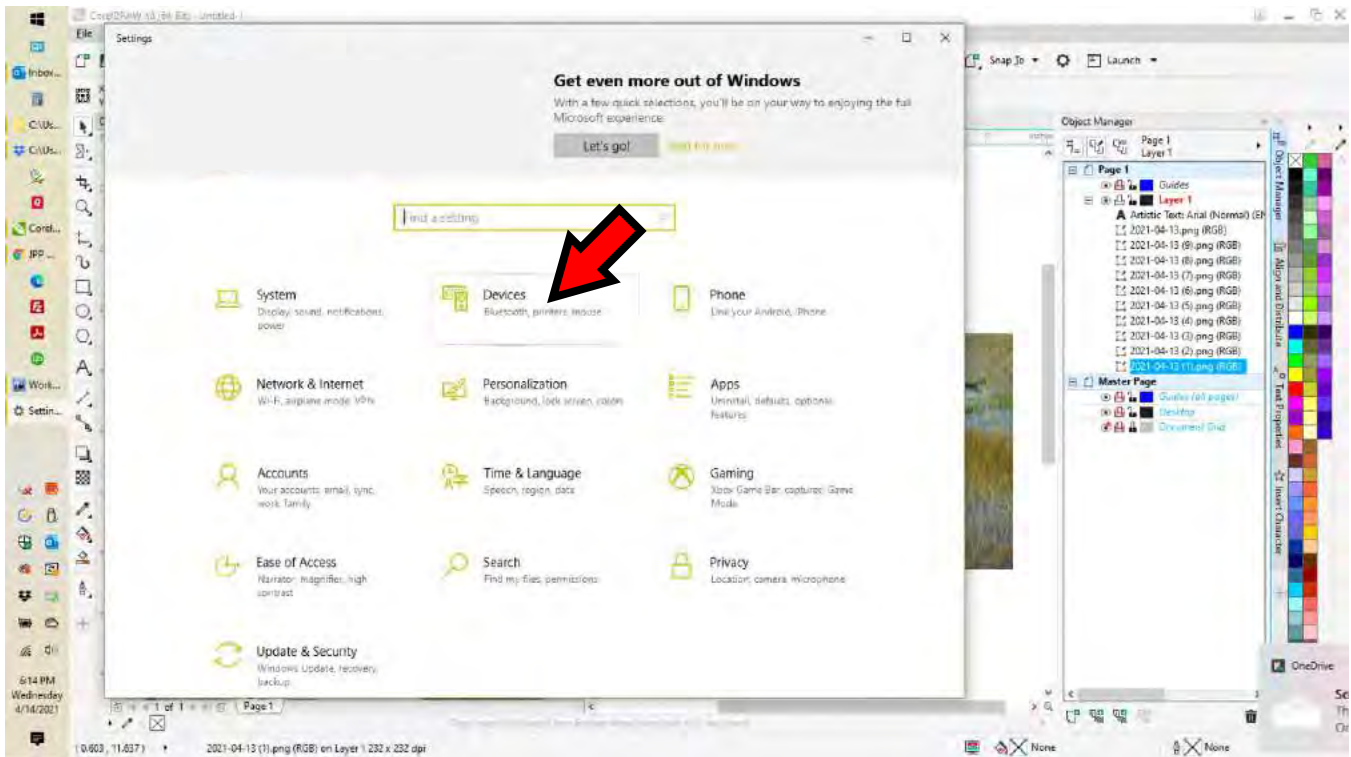


## Canon TM-200 - Setup

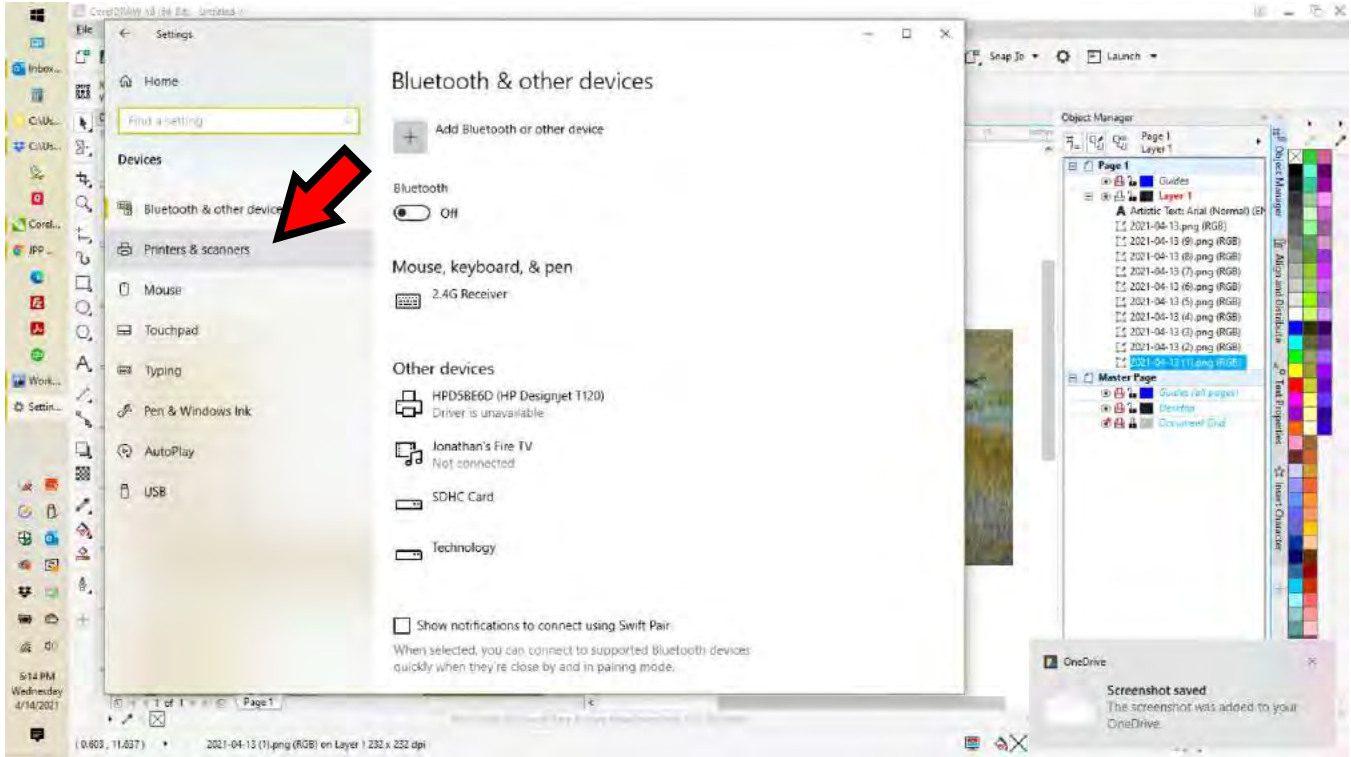
Right Click on Windows Icon on task bar to pull up menu below.  
Then click "Settings"



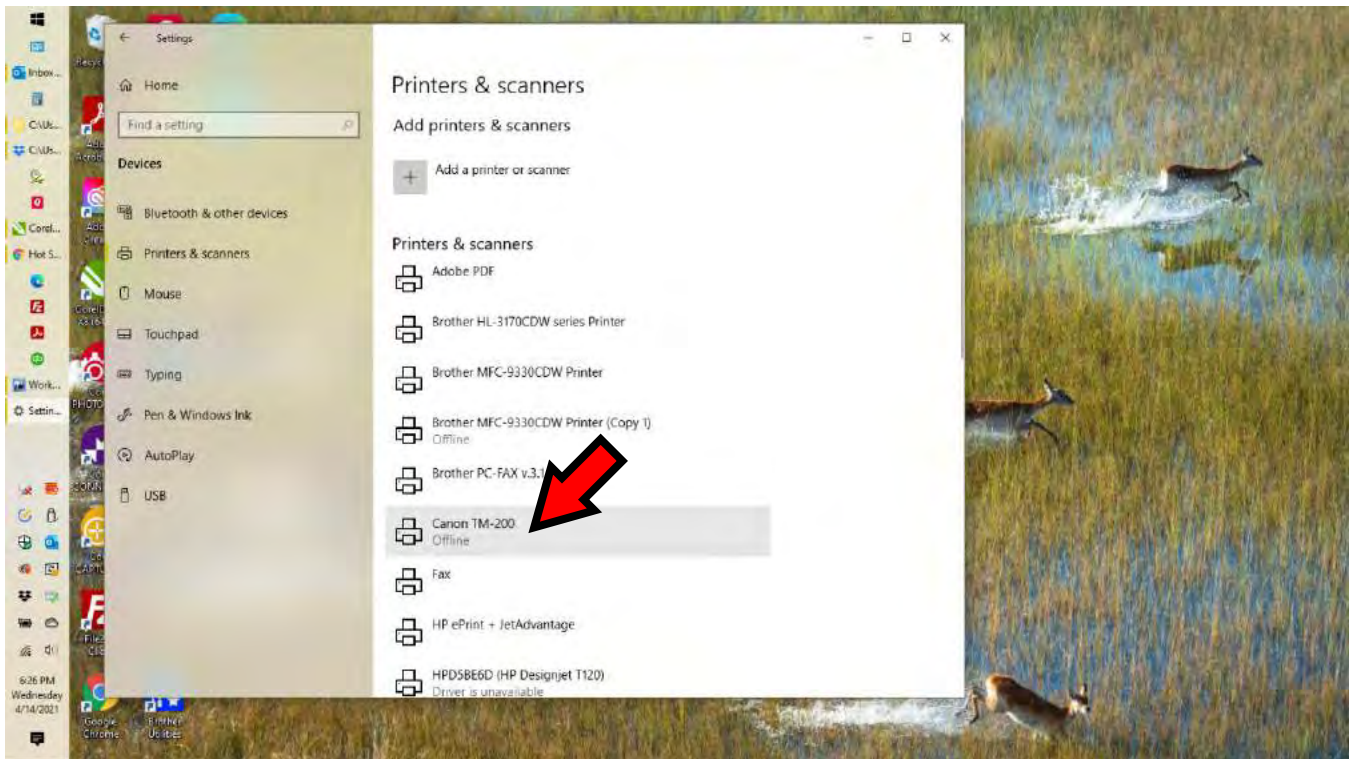
Left click "Devices"



Left click "Printers & Scanners"

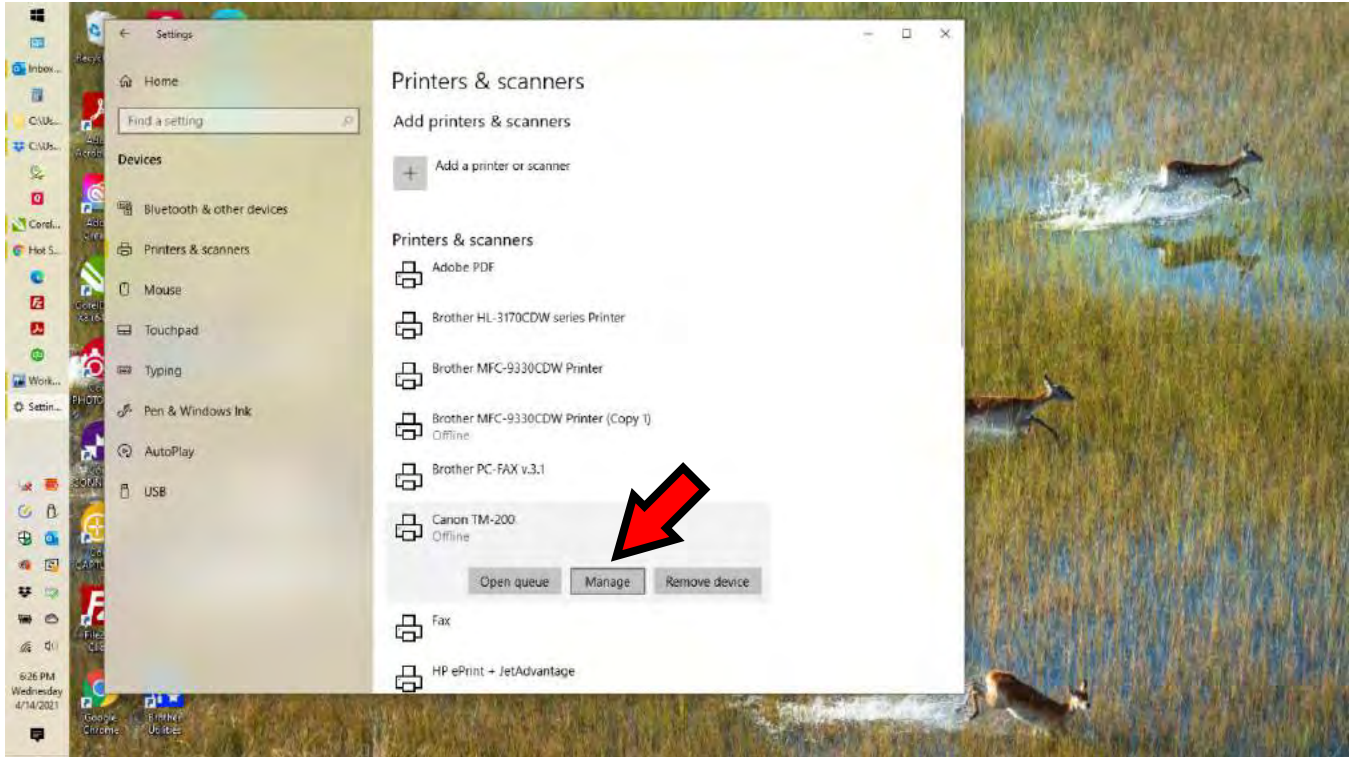


Find the Canon TM-200 in your list of devices and Left click on it to open up available options

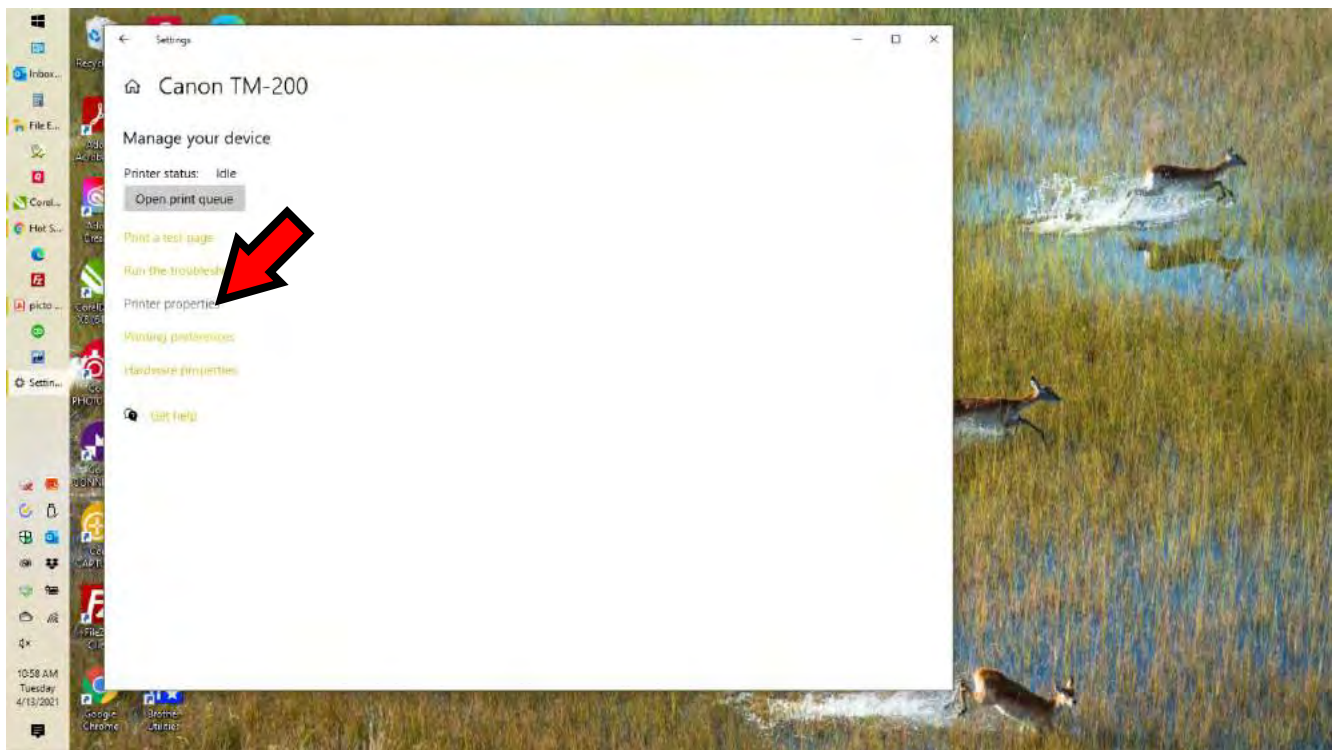




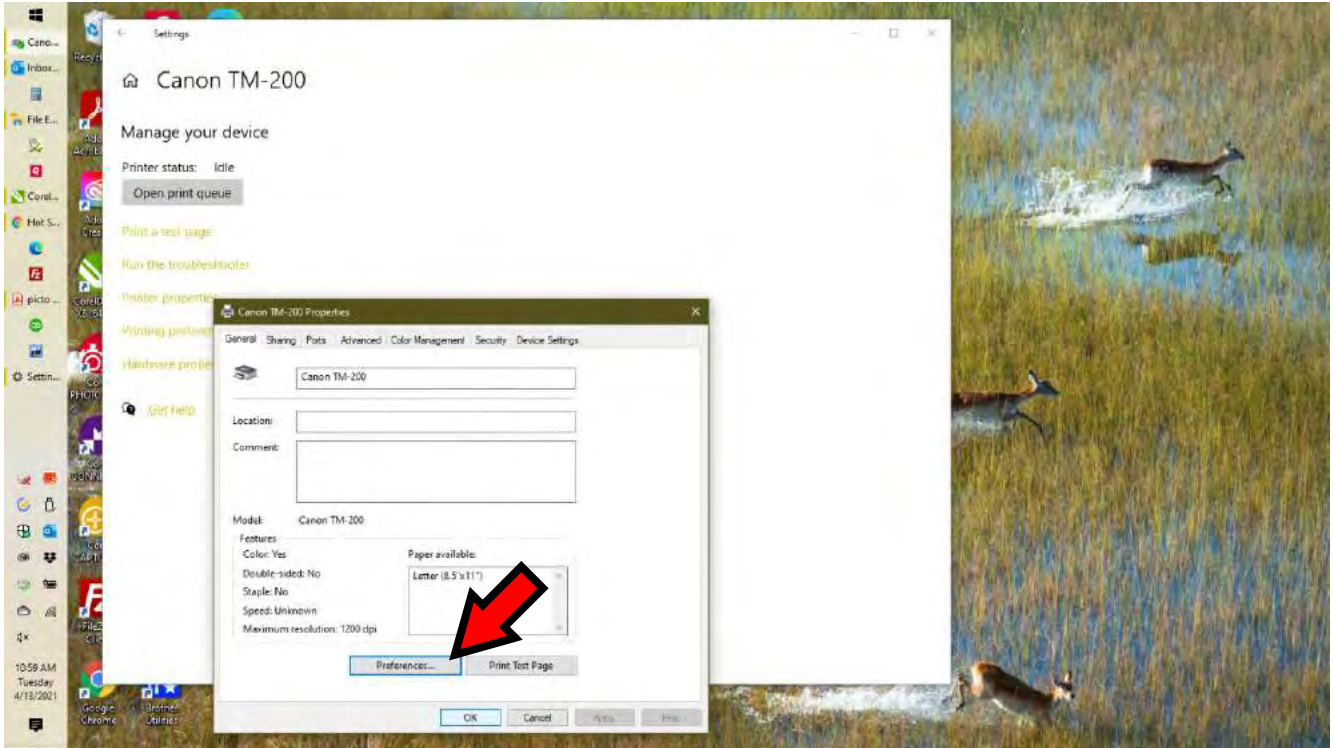
Left click "Manage"



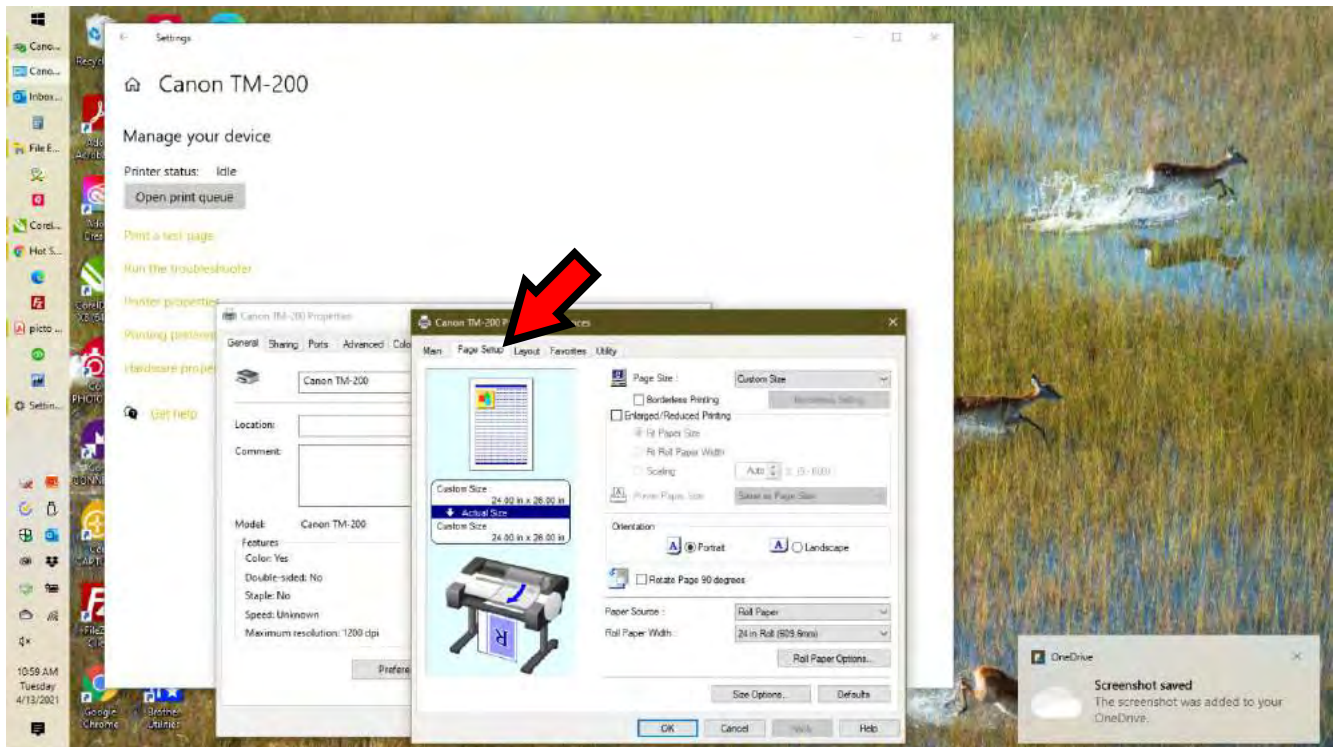
Left click "Printer properties"



Left click "Preferences"

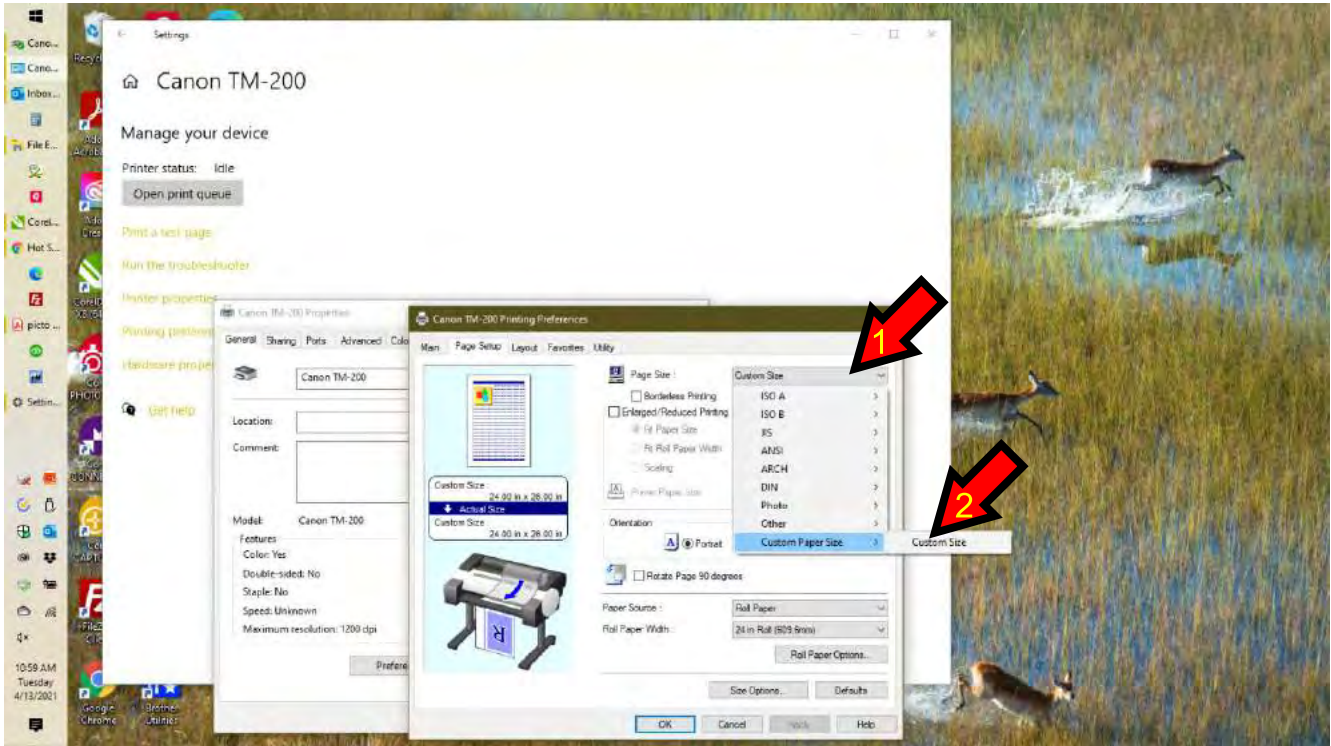


Left click "Page Setup"

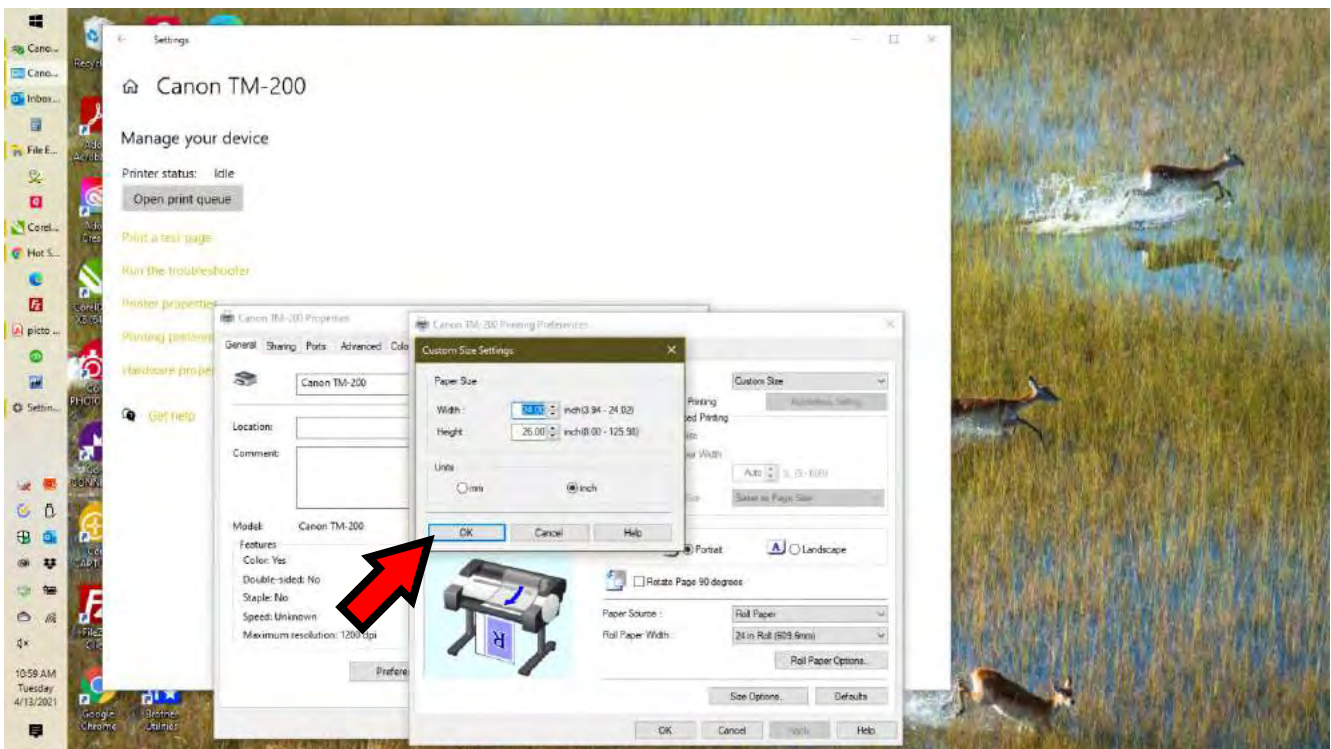




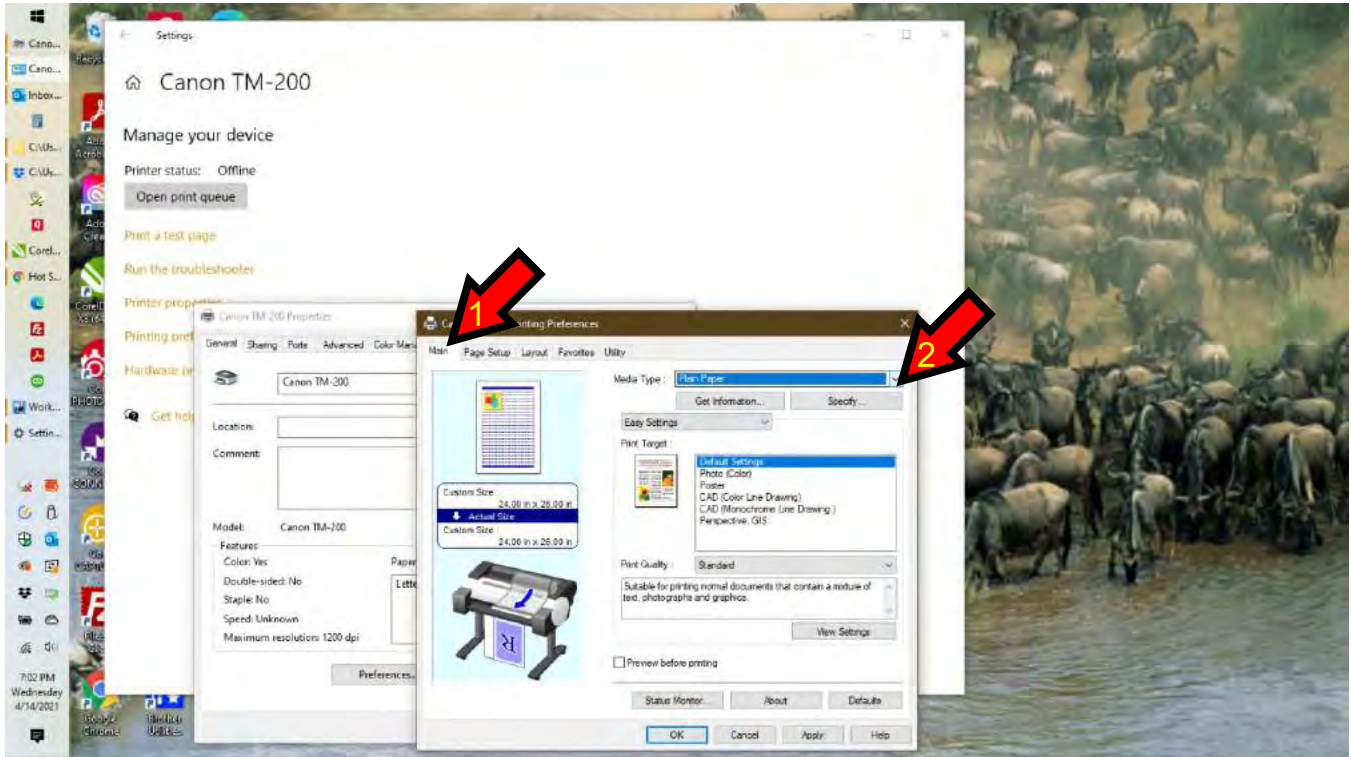
Left click on “Page Size” drop down and click on “Custom Paper Size”



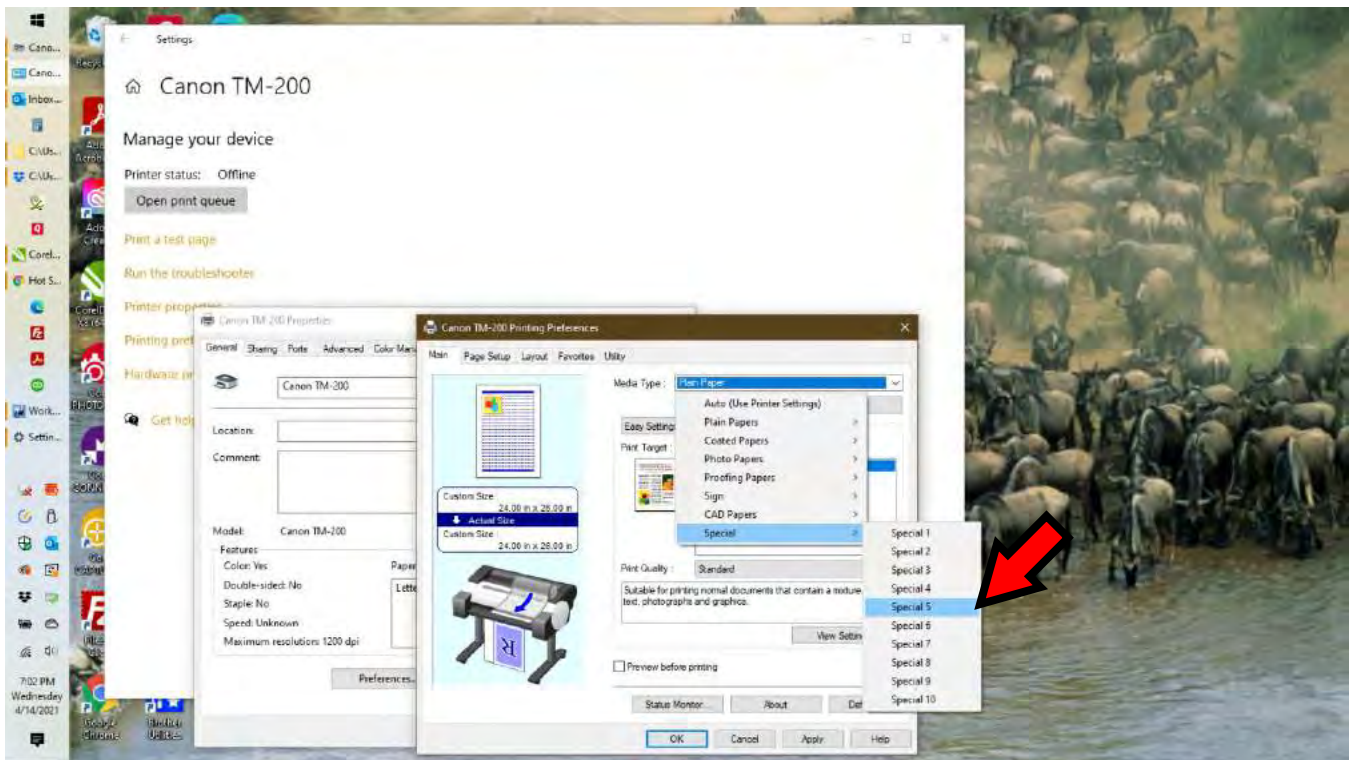
Enter Width of “24.00”  
Enter Length of “26.00”  
Verify that “Inch” is selected  
Left click on “OK”



Left click on “Main” tab drop down and click on “Media Type” for drop down

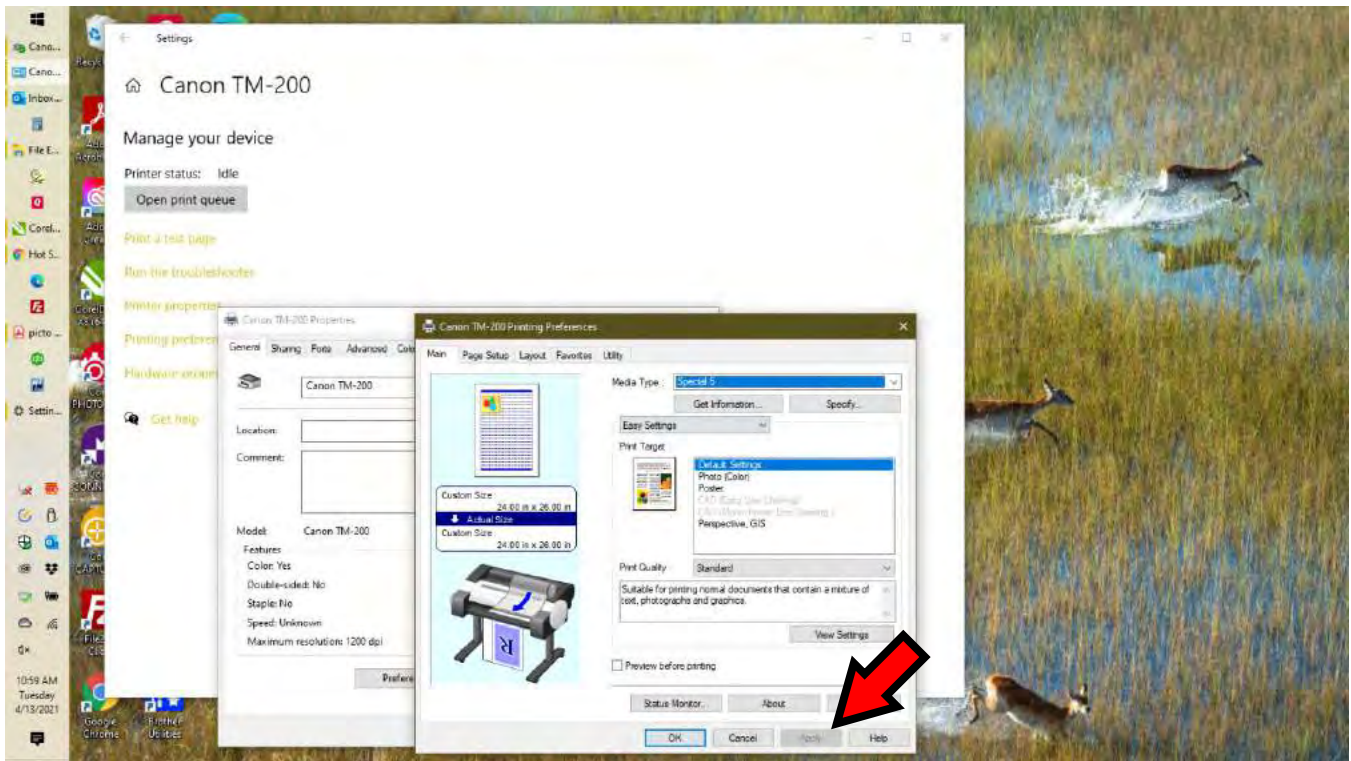


Left click on “Special” then click on “Special 5”

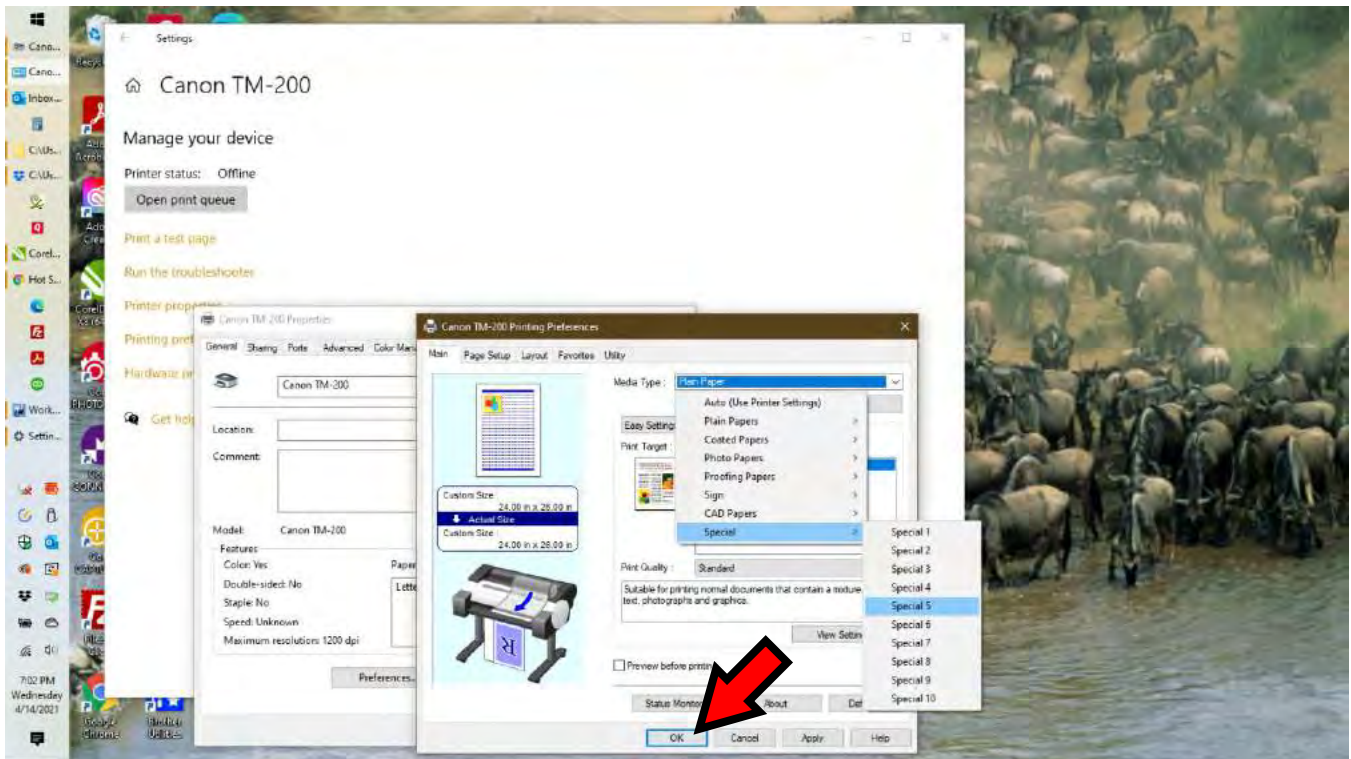




Left click on “Apply” to close the window



Left click on “OK” save all changes and close the window



Close all open windows to get back to desktop and you are now set to print your films.